

AST[®] Adventure![™] 200 Series

Addendum


003777-001 A


March 1997

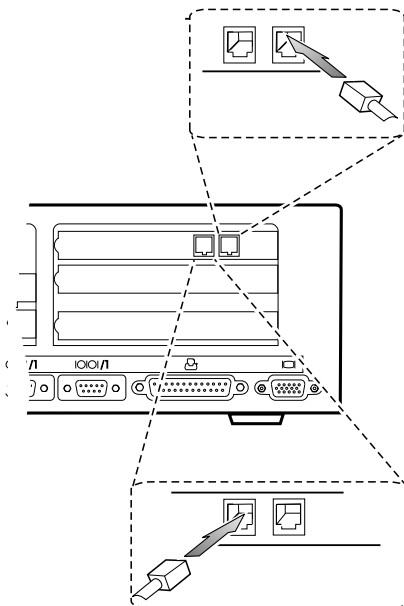
The illustrations on Pages 6 and 7 of the Getting Started guide 003709-001A were incorrect. The correct illustrations are shown below.

Connect the Modem

Not all models include modems. If your system includes a modem,

connect a telephone to the  connector on the back of the system.

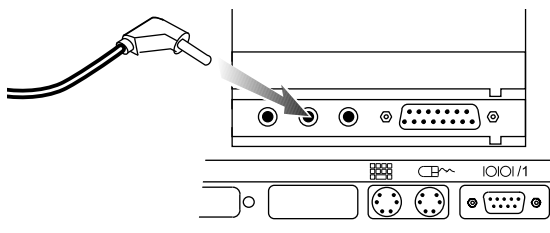
Connect one end of the modem phone cord to the  connector on the back of the system and connect the other end to the wall jack.



3709-05.CDR

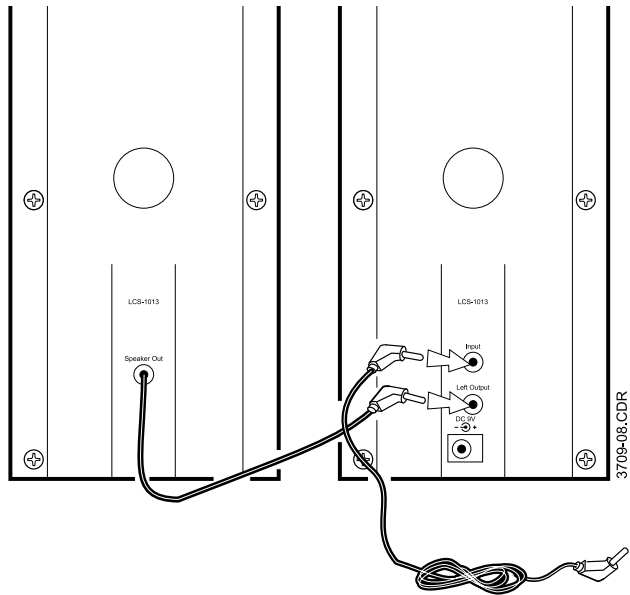
Connect the Speakers

Connect the right speaker (the speaker with controls) to the connector on the rear of the computer labeled LINE OUT.



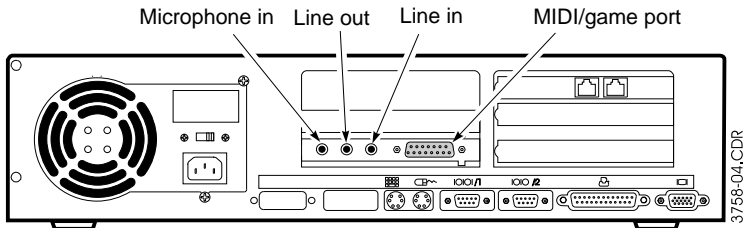
3709-07.CDR

Plug the connector coming from the left speaker into the jack labeled Left Output on the right speaker.



Setting Your Computer Up For Sound

On page 7 of the User's Manual 003708-001A, the Line out and Line in callouts were reversed. The correct callouts are shown below.



Copyright © 1997 AST Research, Inc. All rights are reserved, including those to reproduce this document or parts thereof in any form without permission in writing from AST Research, Inc.

AST Research, Inc. shall not be liable for technical or editorial errors or omissions contained herein; nor for incidental or consequential damages resulting from the furnishing, performance, or use of this material.

AST and AST Research are registered trademarks and Adventure! is a trademark of AST Research Inc. All other product or service names mentioned herein may be trademarks or registered trademarks of their respective owners.